




PIP

**TRAVERSETM
SAFETY HELMETS
AVAILABLE WITH MIPS[®]**

www.pipusa.com

Mips

A photograph of three construction workers at a construction site. The worker in the foreground is wearing a white hard hat, a grey t-shirt, and a high-visibility yellow safety vest with reflective stripes. He is holding a pair of black and red work gloves. Behind him, another worker wears a white hard hat and safety glasses. To the right, a third worker wears a black hard hat and is smiling. The background shows a building under construction with a crane.

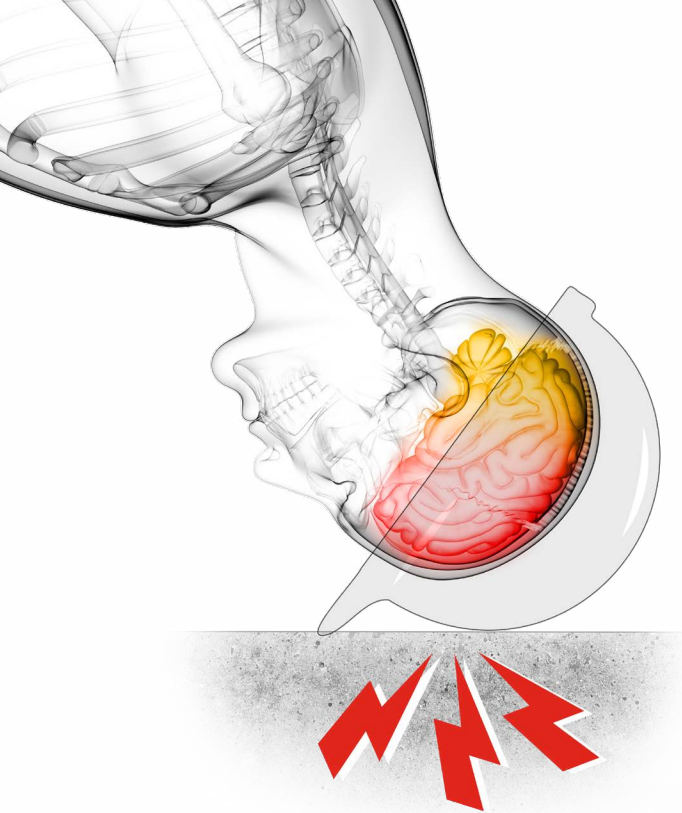
For nearly 100 years the basic purpose of hard hats has remained the same – to help protect the head against impacts from falling objects from above.

While this is still critically important for construction and maintenance workers, data is now telling us that:

**NEARLY 60%
OF HEAD INJURIES**

ARE CAUSED BY FALL ACCIDENTS
FROM HIGHER LEVELS
OR FALLS ON THE SAME LEVEL

**IT'S TIME TO
MOVE FORWARD**



The Science of Head Injury

CONCUSSIONS AND TRAUMATIC BRAIN INJURIES ARE COMMONLY THE RESULT OF ROTATIONAL FORCE AND STRAIN TO THE BRAIN.

Injury statistics demonstrate that when someone trips on a level surface, they are more likely to fall at an angle instead of directly on top of the head. This is due to the forward energy of motion that may extend to the head when hitting the hard ground surface. Over the past few years, science has shown that our brains are very sensitive to rotational forces.

IN THIS SCENARIO, CONVENTIONAL HARD HATS WITHOUT A CHIN STRAP WOULD LIKELY FLY OFF. A CHIN STRAP HELPS, BUT IS IT ENOUGH?

Mips

Introducing the Mips® Brain Protection System for Industrial Safety Helmets

A LOW FRICTION LAYER DESIGNED TO HELP REDUCE THE SEVERITY OF HEAD INJURIES

- > At impact the Mips® System is designed to help reduce the amount of rotational force transferred to the head by redirecting the forces that are generated by the impact
- > The Mips® System allows for a 10-15 mm relative movement between the helmet and the head during the critical first 5-10ms of the impact
- > It is not uncommon that the point load on the head/helmet at impact is at 2,200 lbs. – the Mips® System is designed to allow the helmet to move even under this kind of pressure



MIPS® STYLES MEET BOTH STANDARDS:



ANSI Z89.1

Industrial Head Protection

AND



EN 12492

Mountaineering Equipment Standard

TYPE II

3rd Party Certified

Force Transmission

must be less than an average of 831 lb/ft

4 Off Center Penetration Tests

Front, Back and Sides

Impact Energy Attenuation

Maximum attenuation shall not exceed 150g

Shock Absorbing Capacity

(Clauses 4.2.1.2; 4.2.1.3; 4.2.1.4)
Must be less than 2,248 lb/ft

Retention System Strength

(Clause 4.2.3)

Effectiveness of the Retention System

(Clause 4.2.4)

PENETRATION
2.2 lbs. at 23 ft/s

IMPACT ABSORPTION
8 lbs. at 18 ft/s

PENETRATION
6 lbs. at 3.28 ft

SHOCK ABSORPTION
11 lbs. at 1.64 ft



Mips

MULTI-DIRECTIONAL
IMPACT PROTECTION



PIP® TRAVERSE™ TYPE II SAFETY HELMET, WITH MIPS®



ALSO AVAILABLE IN
A VENTED OPTION

280-HP1491RVM
Vented Shell

ANSI Z89.1	EN 12492*
IMPACT TYPE II	ELECTRICAL CLASS C



280-HP1491RM

Non-Vented Shell

- Super lightweight ABS shell for wearer comfort
- Low frictional layer designed to reduce rotational motion transferred to the head from angled impacts
- EPS foam impact liner helps absorb the forces of front, side, or rear impacts
- 4-point quick-release chin strap for a proper fit
- Sure-lock wheel ratchet for an effortless fit
- Inner padding for added comfort
- Traverse™ specific accessory slots and universal accessory slots on side of safety helmet

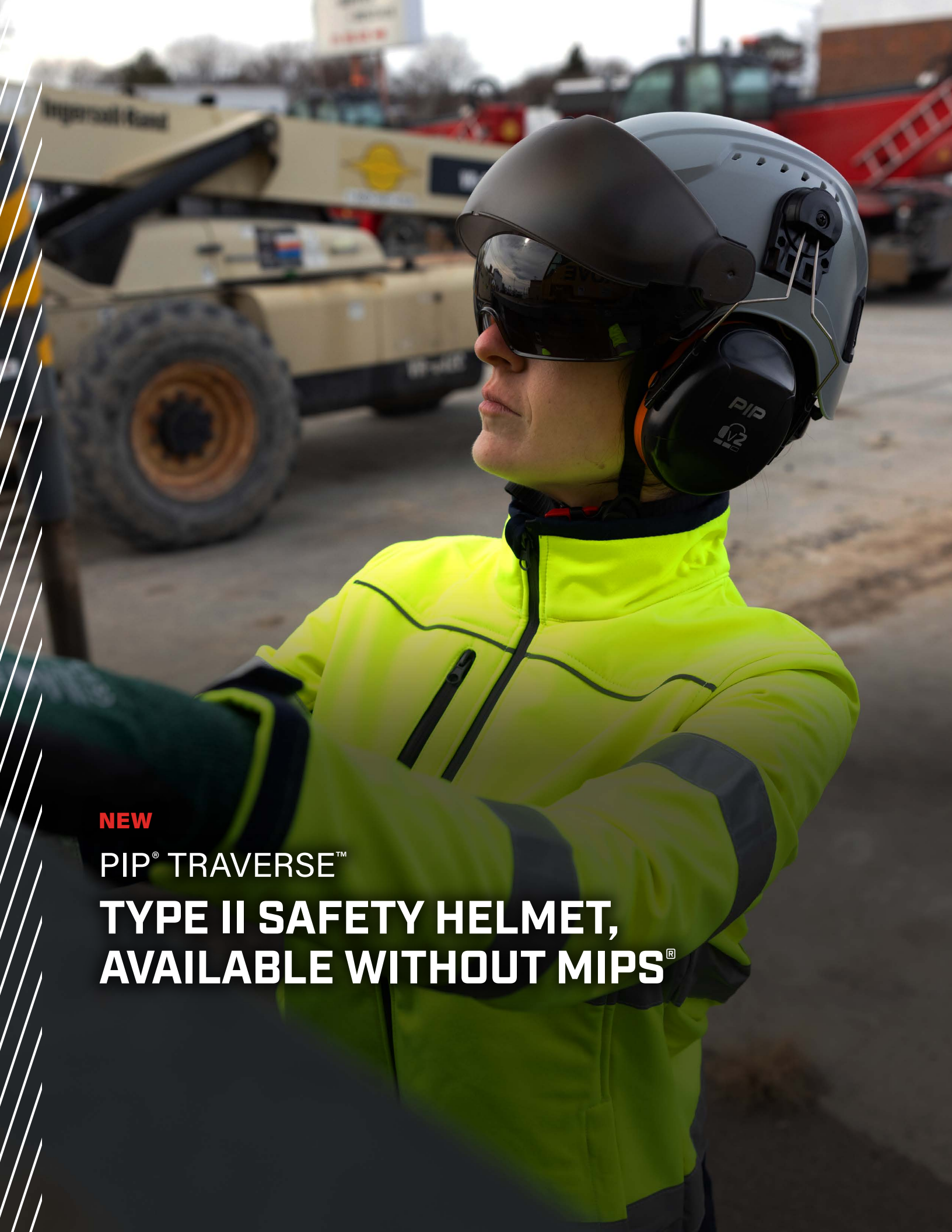
ANSI Z89.1	EN 12492*
IMPACT TYPE II	ELECTRICAL CLASS E

COLORS AVAILABLE



STYLE NUMBER	SIZE ADJUSTMENT	SHELL	COLOR	SHELL MATERIAL	ANSI Z89.1	EN 12492	ELECTRICAL CLASS
280-HP1491RM-01	Sure-Lock Wheel Ratchet	Non-Vented	White	ABS	Type II	Yes	Class E
280-HP1491RM-02	Sure-Lock Wheel Ratchet	Non-Vented	Yellow	ABS	Type II	Yes	Class E
280-HP1491RM-03	Sure-Lock Wheel Ratchet	Non-Vented	Orange	ABS	Type II	Yes	Class E
280-HP1491RM-04	Sure-Lock Wheel Ratchet	Non-Vented	Dark Green	ABS	Type II	Yes	Class E
280-HP1491RM-08	Sure-Lock Wheel Ratchet	Non-Vented	Navy Blue	ABS	Type II	Yes	Class E
280-HP1491RM-09	Sure-Lock Wheel Ratchet	Non-Vented	Gray	ABS	Type II	Yes	Class E
280-HP1491RM-11	Sure-Lock Wheel Ratchet	Non-Vented	Black	ABS	Type II	Yes	Class E
280-HP1491RM-15	Sure-Lock Wheel Ratchet	Non-Vented	Red	ABS	Type II	Yes	Class E
280-HP1491RM-44	Sure-Lock Wheel Ratchet	Non-Vented	Hi-Vis Yellow	ABS	Type II	Yes	Class E
280-HP1491RVM-01	Sure-Lock Wheel Ratchet	Vented	White	ABS	Type II	Yes	Class C
280-HP1491RVM-02	Sure-Lock Wheel Ratchet	Vented	Yellow	ABS	Type II	Yes	Class C
280-HP1491RVM-03	Sure-Lock Wheel Ratchet	Vented	Orange	ABS	Type II	Yes	Class C
280-HP1491RVM-04	Sure-Lock Wheel Ratchet	Vented	Dark Green	ABS	Type II	Yes	Class C
280-HP1491RVM-08	Sure-Lock Wheel Ratchet	Vented	Navy Blue	ABS	Type II	Yes	Class C
280-HP1491RVM-09	Sure-Lock Wheel Ratchet	Vented	Gray	ABS	Type II	Yes	Class C
280-HP1491RVM-11	Sure-Lock Wheel Ratchet	Vented	Black	ABS	Type II	Yes	Class C
280-HP1491RVM-15	Sure-Lock Wheel Ratchet	Vented	Red	ABS	Type II	Yes	Class C
280-HP1491RVM-44	Sure-Lock Wheel Ratchet	Vented	Hi-Vis Yellow	ABS	Type II	Yes	Class C

*EN12492: SHOCK ABSORBING CAPACITY (CLAUSES 4.2.1.2; 4.2.1.3; 4.2.1.4), RETENTION SYSTEM STRENGTH (CLAUSE 4.2.3), EFFECTIVENESS OF THE RETENTION SYSTEM (CLAUSE 4.2.4)



NEW

PIP® TRAVERSE™

**TYPE II SAFETY HELMET,
AVAILABLE WITHOUT MIPS®**



280-HP1491R

Non-Vented Shell

- Super lightweight ABS shell for wearer comfort
- EPS foam impact liner helps absorb the forces of top-of-head, front, side, and rear impacts
- 4-point quick-release chin strap for a proper fit
- Sure-lock wheel ratchet for an effortless fit
- Inner padding for added comfort
- Traverse™ specific accessory slots and universal accessory slots on side of safety helmet

ANSI
Z89.1

EN
12492*

IMPACT TYPE
II

ELECTRICAL CLASS
E

COLORS AVAILABLE



Inner padding
for added comfort



**ALSO AVAILABLE IN
A VENTED OPTION**

280-HP1491RV

Vented Shell

ANSI
Z89.1

EN
12492*

IMPACT TYPE
II

ELECTRICAL CLASS
C

STYLE NUMBER	SIZE ADJUSTMENT	SHELL	COLOR	SHELL MATERIAL	ANSI Z89.1	EN 12492	ELECTRICAL CLASS
280-HP1491R-01	Sure-Lock Wheel Ratchet	Non-Vented	White	ABS	Type II	Yes	Class E
280-HP1491R-02	Sure-Lock Wheel Ratchet	Non-Vented	Yellow	ABS	Type II	Yes	Class E
280-HP1491R-03	Sure-Lock Wheel Ratchet	Non-Vented	Orange	ABS	Type II	Yes	Class E
280-HP1491R-04	Sure-Lock Wheel Ratchet	Non-Vented	Dark Green	ABS	Type II	Yes	Class E
280-HP1491R-08	Sure-Lock Wheel Ratchet	Non-Vented	Navy Blue	ABS	Type II	Yes	Class E
280-HP1491R-09	Sure-Lock Wheel Ratchet	Non-Vented	Gray	ABS	Type II	Yes	Class E
280-HP1491R-11	Sure-Lock Wheel Ratchet	Non-Vented	Black	ABS	Type II	Yes	Class E
280-HP1491R-15	Sure-Lock Wheel Ratchet	Non-Vented	Red	ABS	Type II	Yes	Class E
280-HP1491R-44	Sure-Lock Wheel Ratchet	Non-Vented	Hi-Vis Yellow	ABS	Type II	Yes	Class E
280-HP1491RV-01	Sure-Lock Wheel Ratchet	Vented	White	ABS	Type II	Yes	Class C
280-HP1491RV-02	Sure-Lock Wheel Ratchet	Vented	Yellow	ABS	Type II	Yes	Class C
280-HP1491RV-03	Sure-Lock Wheel Ratchet	Vented	Orange	ABS	Type II	Yes	Class C
280-HP1491RV-04	Sure-Lock Wheel Ratchet	Vented	Dark Green	ABS	Type II	Yes	Class C
280-HP1491RV-08	Sure-Lock Wheel Ratchet	Vented	Navy Blue	ABS	Type II	Yes	Class C
280-HP1491RV-09	Sure-Lock Wheel Ratchet	Vented	Gray	ABS	Type II	Yes	Class C
280-HP1491RV-11	Sure-Lock Wheel Ratchet	Vented	Black	ABS	Type II	Yes	Class C
280-HP1491RV-15	Sure-Lock Wheel Ratchet	Vented	Red	ABS	Type II	Yes	Class C
280-HP1491RV-44	Sure-Lock Wheel Ratchet	Vented	Hi-Vis Yellow	ABS	Type II	Yes	Class C

*EN12492: SHOCK ABSORBING CAPACITY (CLAUSES 4.2.1.2; 4.2.1.3; 4.2.1.4), RETENTION SYSTEM STRENGTH (CLAUSE 4.2.3), EFFECTIVENESS OF THE RETENTION SYSTEM (CLAUSE 4.2.4)



NEW

PIP® TRAVERSE™

**TYPE I SAFETY HELMET,
WITHOUT MIPS®**



280-HP1490R

Non-Vented Shell

- Super lightweight ABS shell for wearer comfort
- EPS foam impact liner helps absorb the forces of top-of-head, front, side, and rear impacts
- 4-point quick-release chin strap for a proper fit
- Sure-lock wheel ratchet for an effortless fit
- Inner padding for added comfort
- Traverse™ specific accessory slots and universal accessory slots on side of safety helmet

ANSI 289.1	EN 12492*
IMPACT TYPE I	ELECTRICAL CLASS E

COLORS AVAILABLE



Inner padding
for added comfort



ALSO AVAILABLE IN
A VENTED OPTION

280-HP1490RV

Vented Shell

ANSI 289.1	EN 12492*
IMPACT TYPE I	ELECTRICAL CLASS C

STYLE NUMBER	SIZE ADJUSTMENT	SHELL	COLOR	SHELL MATERIAL	ANSI 289.1	EN 12492	ELECTRICAL CLASS
280-HP1490R-01	Sure-Lock Wheel Ratchet	Non-Vented	White	ABS	Type I	Yes	Class E
280-HP1490R-02	Sure-Lock Wheel Ratchet	Non-Vented	Yellow	ABS	Type I	Yes	Class E
280-HP1490R-03	Sure-Lock Wheel Ratchet	Non-Vented	Orange	ABS	Type I	Yes	Class E
280-HP1490R-04	Sure-Lock Wheel Ratchet	Non-Vented	Dark Green	ABS	Type I	Yes	Class E
280-HP1490R-08	Sure-Lock Wheel Ratchet	Non-Vented	Navy Blue	ABS	Type I	Yes	Class E
280-HP1490R-09	Sure-Lock Wheel Ratchet	Non-Vented	Gray	ABS	Type I	Yes	Class E
280-HP1490R-11	Sure-Lock Wheel Ratchet	Non-Vented	Black	ABS	Type I	Yes	Class E
280-HP1490R-15	Sure-Lock Wheel Ratchet	Non-Vented	Red	ABS	Type I	Yes	Class E
280-HP1490R-44	Sure-Lock Wheel Ratchet	Non-Vented	Hi-Vis Yellow	ABS	Type I	Yes	Class E
280-HP1490RV-01	Sure-Lock Wheel Ratchet	Vented	White	ABS	Type I	Yes	Class C
280-HP1490RV-02	Sure-Lock Wheel Ratchet	Vented	Yellow	ABS	Type I	Yes	Class C
280-HP1490RV-03	Sure-Lock Wheel Ratchet	Vented	Orange	ABS	Type I	Yes	Class C
280-HP1490RV-04	Sure-Lock Wheel Ratchet	Vented	Dark Green	ABS	Type I	Yes	Class C
280-HP1490RV-08	Sure-Lock Wheel Ratchet	Vented	Navy Blue	ABS	Type I	Yes	Class C
280-HP1490RV-09	Sure-Lock Wheel Ratchet	Vented	Gray	ABS	Type I	Yes	Class C
280-HP1490RV-11	Sure-Lock Wheel Ratchet	Vented	Black	ABS	Type I	Yes	Class C
280-HP1490RV-15	Sure-Lock Wheel Ratchet	Vented	Red	ABS	Type I	Yes	Class C
280-HP1490RV-44	Sure-Lock Wheel Ratchet	Vented	Hi-Vis Yellow	ABS	Type I	Yes	Class C

*EN12492: SHOCK ABSORBING CAPACITY (CLAUSES 4.2.1.2; 4.2.1.3; 4.2.1.4), RETENTION SYSTEM STRENGTH (CLAUSE 4.2.3), EFFECTIVENESS OF THE RETENTION SYSTEM (CLAUSE 4.2.4)



CUSTOM ACCESSORY OPTIONS

FOR PIP® TRAVERSE™ SAFETY HELMET

All Accessories Sold Separately



ANSI Z87+

251-HP1491C

Clear

Eye Shield

- Provides eye protection against hazards
- Scratch resistant and anti-fog



ANSI Z87+

251-HP1491G

Smoke Gray



251-HP1491P

Eye Shield Protector

Smoke

- Protects the eye shield from scratches
- Has a mounting slot on protector to allow headlamp to be worn



263-V1CM

V1 Cap Mounted Ear Muff

- Universal fit
- NRR Rating: 23
- Adjustable length



263-V2CM

V2 Cap Mounted Ear Muff

- Universal fit
- NRR Rating: 24
- Adjustable length



263-V3CM

V3 Cap Mounted Ear Muff

- Universal fit
- NRR Rating: 26
- Adjustable length



280-HP1491FSUN

360 Degree Fabric Sunshade



251-HP1491PFS

Polycarbonate Faceshield Set



280-HP1491KIT

Reflective Decal Kit

Silver

- Reflective sticker kit for increased visibility at night
- Only available in silver



280-HP1491VC

Vent Covers

- Made from TPR
- Close vents on top of helmet to protect against rain

280-HP1491NS

Neck Sunshade

- Provides sun and rain protection for the neck
- Made from hi-vis ripstop material with reflective striping



*Head lamp not included
and is not sold by PIP®*



280-HP1491SUN

Sun Brim Extension

- Brim clips onto the front of the helmet for additional protection from the sun or rain
- Easy on/off clips



280-HP1491BAGB

Basic Storage Bag

- Drawstring bag
- Soft bag to protect against damage during storage and transport



280-HP1491BAGD

Deluxe Storage Bag

- Zippered storage bag to easily hang and store product to protect from damage
- Identification label



280-HP1491TAG

Name Tag Holder

- Easy to install plastic name tag holder
- Weather resistant

REPLACEMENT PARTS



251-HP1491PF

Polycarbonate

251-HP1491MF

Metal Mesh

Replacement Faceshields



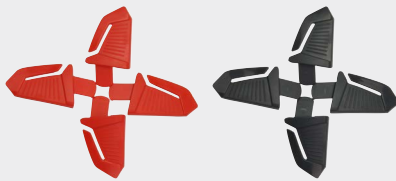
251-HP1491B

Replacement Faceshield Bracket



280-HP1491CS

Replacement 4-Point Chinstrap



280-HP1491LCR

Red

280-HP1491LCG

Dark Gray

Replacement Lamp Clips

- Pack of 4
- Universal strap holder for head lamp



251-HP1491PC

Replacement Eye Shield Protector Connector

- Replacement clips to connect the eye shield to the helmet
- Pack of 2



280-HP1491PAD

Replacement Pad Kit

- 3-piece replacement padding set
- Crown, front and rear padding



PROTECTIVE INDUSTRIAL PRODUCTS, INC.

518-861-0133 | 800-262-5755

sales@pipusa.com | www.pipusa.com